



**SAFETY RAIL CO.**  
THE SAFEST



## Self-Closing Gate

The SRC Adjustable Self-Closing Gates are an OSHA-compliant solution for securing unprotected openings, suitable for both indoor and outdoor use. They comply with OSHA standards 29 CFR 1910.29 & 29 CFR 1926.502 and are tested for 200 lb force. Gates in a range of sizes and are adjustable. Each gate includes all hardware required and can typically be installed by a single crew member in less than 20 minutes.



### Features

- ⊗ Heavy-duty construction ideal for commercial and industrial environments
- ⊗ Self-closing hinge utilizes durable stainless steel torsion springs
- ⊗ Universal mount, allows for right-hand or left-hand swing; mounts to round and square posts, flat bars and walls.
- ⊗ No welding or drilling required for installation
- ⊗ Standard Finish Options: Powder-coated Safety Yellow, Galvanized & Stainless Steel
- ⊗ American Welding Society Certified (AWS D1.1 & D1.3)
- ⊗ 100% Made in USA

### Applications

Designed to be used at points of access within a guardrail system (such as ladderways) to prevent unintentional exit or entry into the access opening such as:

- ⊗ Ladders
- ⊗ Stairways
- ⊗ Work access platforms
- ⊗ Loading zones

### Minimum Requirements

- ✓ Requires sound substrate for mounting gates capable of supporting 200 lb point load on railing system

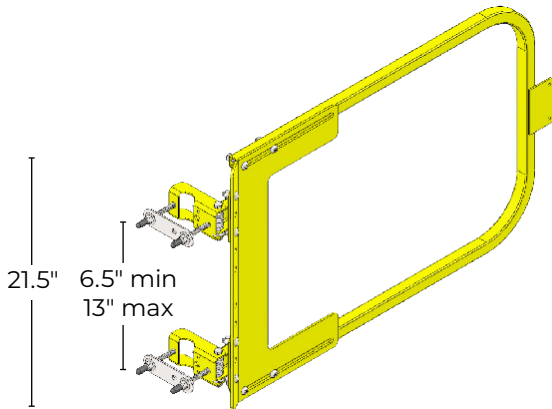
# Self-Closing Gate

## PRODUCT SPECIFICATIONS



### Dimensions & Length Options

*\*Assembled Height*



#### Length Options

Small	16-22"
Medium	19-25"
Large	26-32"
XL	33-39"

*\*Wide range of additional custom sizes available*

Powdercoat  
Safety Yellow

Galvanized

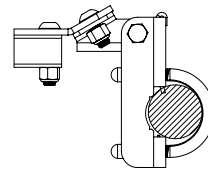
304 Stainless  
Steel

Custom  
Colors

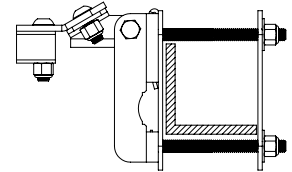
#### Finish Options

#### Mount Options

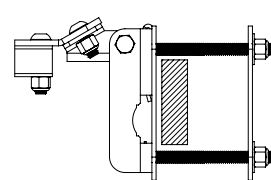
*\*Universal mount hinge, can also be anchored into a flat wall*



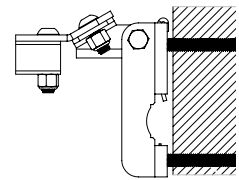
Round Post



Angle Iron



Flat/Square Bar



Concrete Wall

### Product Specifications

Designed in accordance with OSHA Standards (29 CFR 1910.29)

Tested for 200 lb (90.7kg) force in a downward or outward direction

Assembled height: 42" (107cm) top rail, 21" (53cm) mid rail

302 stainless steel torsion springs

Gate body material:  $\frac{3}{16}$ " sheet metal or 304 stainless steel

Gate arm material: 1" x 14 gauge square tube

Each size has 6" of adjustment

100% Made in USA

American Welding Society Certified (AWS D1.1 & D1.3)

### Installation

- ⦿ All mounting hardware provided
- ⦿ Install top of gate at 42" (107cm) resulting in 21" (53cm) mid-rail height required by OSHA
- ⦿ Single person installation
- ⦿ Intended for both interior and exterior uses
- ⦿ Estimated time to completion: 15 minutes

### Compliance

Compliant with OSHA standards for guardrails: (29 CFR 1910.29 & 29 CFR 1926.502)

Independently tested by a nationally accredited engineering lab

– documentation available upon request

