



SAFETY RAIL CO.
THE SAFEST



SRC Accu-Fit Metal Roof System

Traditional Series

The SRC Accu-Fit Metal Roof Rail system is a compression-fit passive fall protection barrier system that protects workers from accidental falls. This system offers a continuous, uniform, vertical profile and a swept back railing profile that both enhances appearance and is often desirable by clients for use in high traffic areas in view of the public.



Features

- ⊗ Self-drilling screws for r-panel; clamps for standing seam
- ⊗ Modular design for unlimited configurations
- ⊗ No welding or drilling required for installation
- ⊗ Rail Finish Options: Powder-coated Safety Yellow & Galvanized
Base Finish: Galvanized
- ⊗ No intermediate counterweights required
- ⊗ American Welding Society Certified (AWS D1.1 & D1.3)
- ⊗ 100% Made in USA

Applications

The SRC Accu-Fit Metal Roof Rail system is designed especially for metal roof tops requiring OSHA-compliant fall protection or barrier guarding. Commonly used in industrial, commercial and work-site/construction environments as a permanent or temporary protection solution.

Minimum Requirements

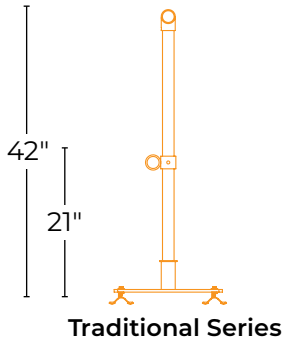
- ✓ For standing seam metal roofs between 16-24" wide seam pattern (custom solutions for other sizes when provided)
- ✓ For raised panel metal roofs with 12" rib pattern (custom solutions for other sizes when provided)

Accu-Fit Metal Roof System

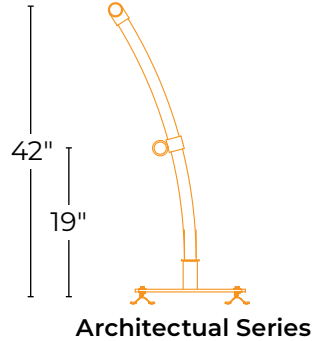


Dimensions & Length Options

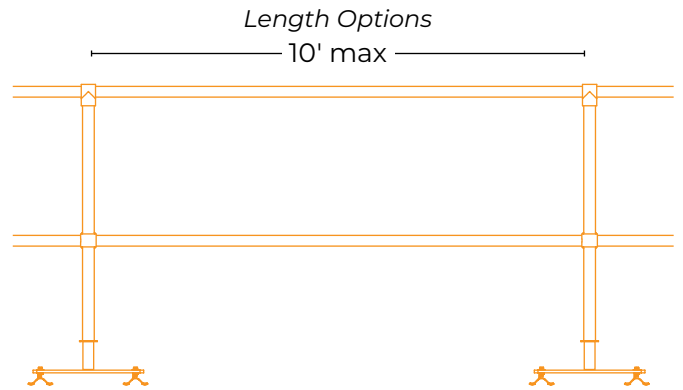
**Assembled Height*



Traditional Series



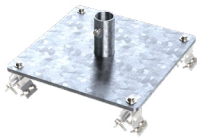
Architectural Series



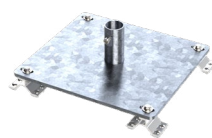
**Railing length options 8' max in the State of California*

Metal Roof Attachment Options

R-Panel



Corrugated



Standing Seam



Finish Options

Safety Yellow
(railings only)

Galvanized

Custom
Colors

Product Specifications

Tested for 200 lb (90.7kg) force in a downward or outward direction

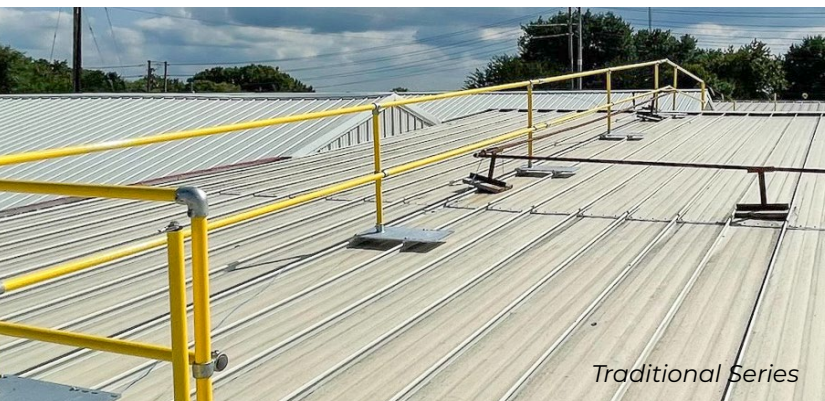
Assembled height: 42" (107cm) top rail, 21" (53cm) mid rail or 19" (48cm) mid rail

Standing seam base plates compression fit; R-panel mounts have self drilling screws

Models for 16", 18" and 24" standing seams; 12" raised panel (custom sizes available upon request)

1 1/4" SCH 40 galvanized pipe

American Welding Society Certified (AWS D1.1 & D1.3)



Traditional Series

Installation

- Ⓢ Safety Rail Co. provided project specific product install plan available
- Ⓢ No welding or drilling required for R-Panel and Corrugated attachments
- Ⓢ Comes in 21' length pipes; cut to length as needed
- Ⓢ Multi-person installations are preferred
- Ⓢ Complete installation guidelines available electronically

Compliance

Compliant with OSHA standards for guardrails: (29 CFR 1910.29 & 29 CFR 1926.502)

Compliant with Cal-OSHA standards: (3209 & 1620)

Independently tested by a nationally accredited engineering lab

– documentation available upon request