



SafetyRailCompany

Fall Protection for Life and Compliance



SRC REMOVABLE FACE MOUNT GUARDRAIL RAILING SYSTEMS FOR BARRIER AND FALL PROTECTION

DESCRIPTION

SRC Removable Face Mount Guardrails are an OSHA compliant, passive fall protection and barrier railing system. This wall mounted system features lift-out removable railing sections to allow access when needed while the wall mounts remain permanently anchored. System utilizes prefabricated railing lengths ranging from 2' to 10' sizes.

USES

The SRC Removable Face Mount Guardrails can be mounted below the walking surface on vertical walls of floor openings and shipping pits, or just about anywhere an OSHA compliant barrier system is required. System allows railings to be removed while railing mount remains in place.

OSHA COMPLIANCE

- Compliant with OSHA standards:
(29 CFR 1910.29 & 29 CFR 1926.502)
- Independently tested by a nationally accredited engineering lab - documentation available upon request

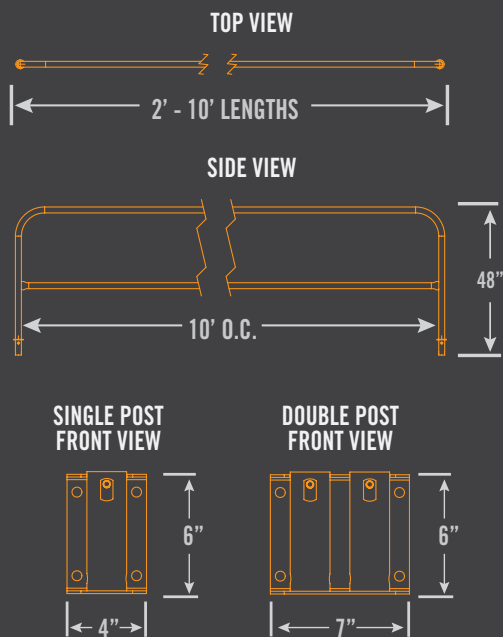
FEATURES

- Face mounted railing sections can be removed for access as needed
- Prefabricated railing sections eliminate need for on-site assembly
- Available in 2' to 10' lengths in 1' increments
- Extended length railings allow mounting below walking surfaces
- Made from 1.625" tubing by AWS certified welders
- 100% made in USA
- Powder coat and galvanized finishes available
- Custom RAL colors available

MINIMUM REQUIREMENTS

- Requires sound substrate for mounting base plates capable of supporting 200 lb point load on railing system
- Designed for flat, level surfaces not to exceed 1:12 pitch

DIMENSIONS

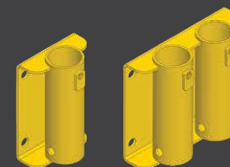


SIZE OPTIONS

2' x 48" high	10 lbs
3' x 48" high	13 lbs
4' x 48" high	15 lbs
5' x 48" high	17 lbs
6' x 48" high	19 lbs
7' x 48" high	20 lbs
8' x 48" high	23 lbs
9' x 48" high	25 lbs
10' x 48" high	28 lbs

RAILINGS WILL STAND 42" ABOVE WALKING SURFACE WHEN PLACED IN FACE MOUNTS

FACE MOUNT RAILING HOLDERS



FINISH OPTIONS



PRODUCT SPECIFICATIONS

- Designed in accordance with OSHA Standards (29 CFR 1910.29 and CFR 1926.502)
- Tested for 200 lb (90.7kg) force in any direction
- Assembled height: 42" (107cm) top rail when mounted on wall below floor level
- Mechanically anchor to sound substrate
- 100% Made in USA & American Welding Society Certified (AWS D1.1 & D1.3)
- 1.625" x .065w x 48" h tubing construction
- Standard 2' to 10' lengths available
- Custom size railings available
- Variety of finish options available



INSTALLATION

- Position first railing mount where needed and mark holes on wall
- Drill holes in concrete and install 3/8" x 2 1/2" wedge anchors
- Place mount over anchors and fasten securely. Insert railing into mounts and secure with pin
- Estimated time to completion: 30 minutes

PROJECT:

CONTRACTOR:

DATE:

Certified third party OSHA testing results available on request